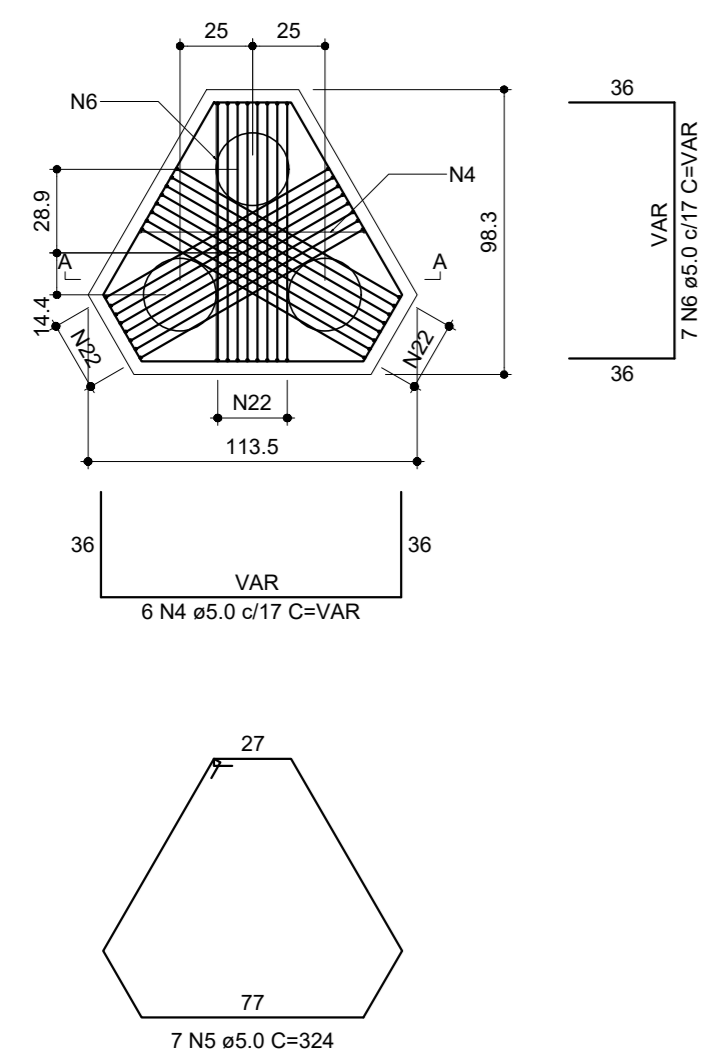
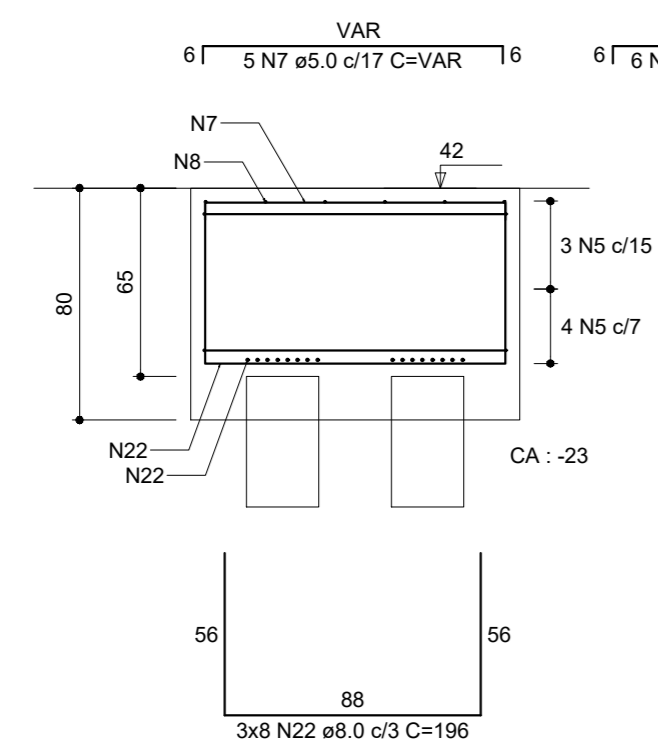


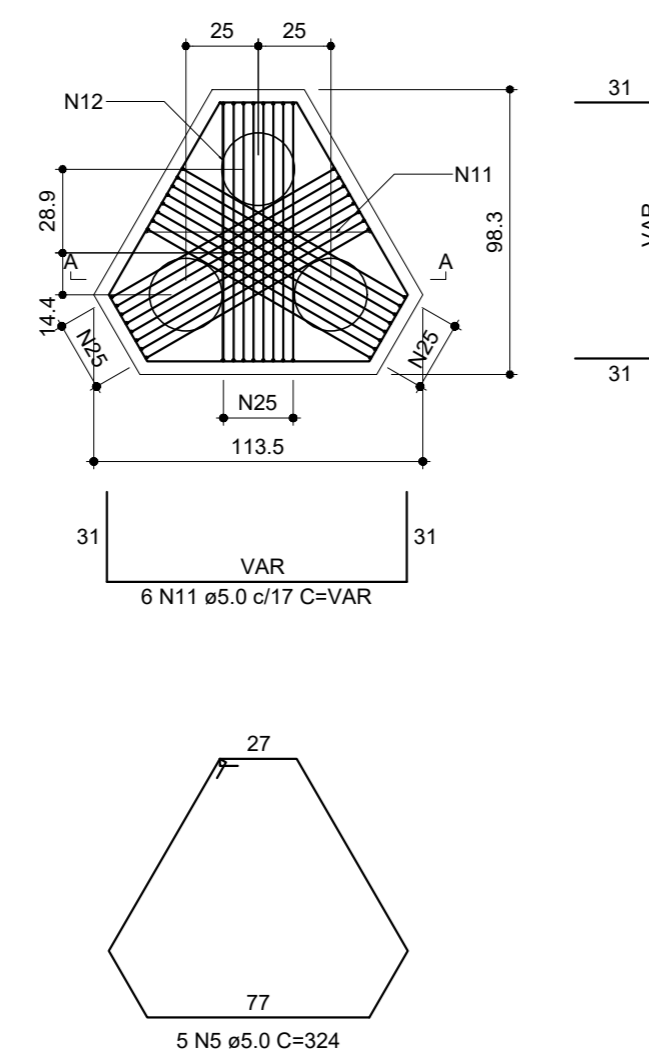
B14=B16=B18=B23=B25
3xC25
PLANTA
ESC 1:25



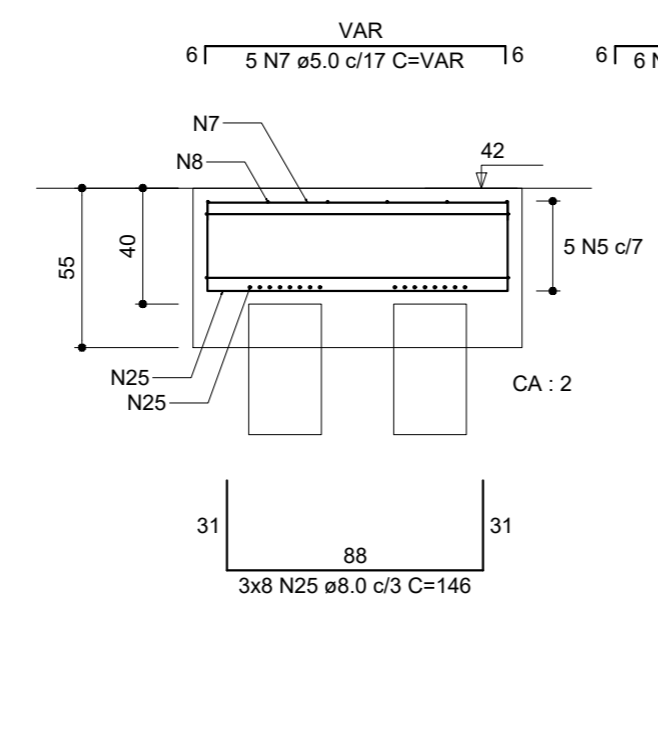
CORTE A-A
ESC 1:25



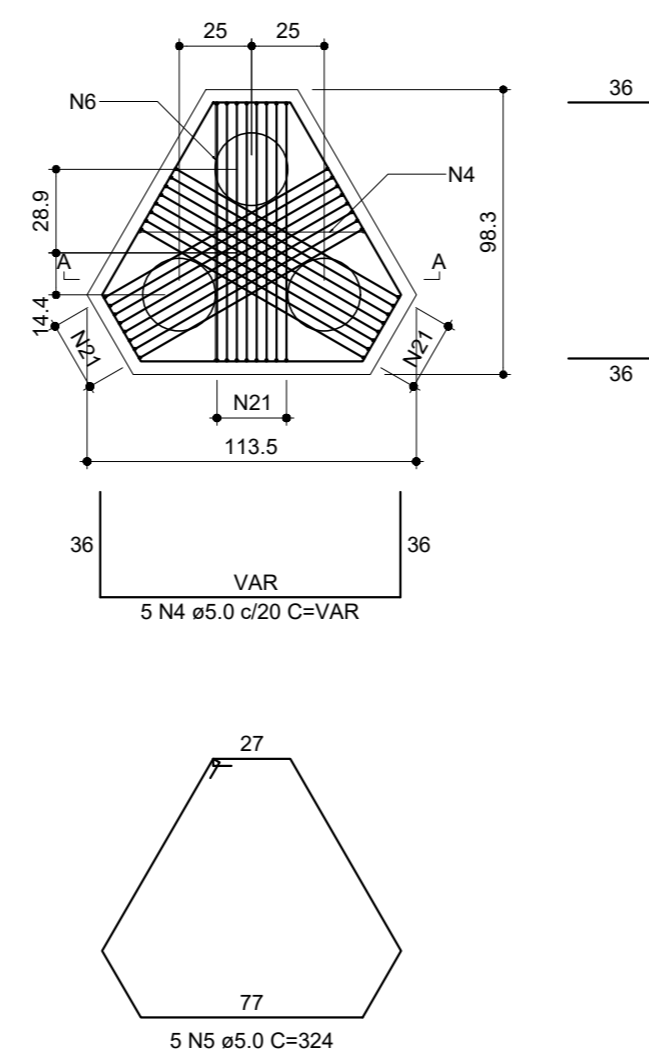
B42
3xC25
PLANTA
ESC 1:25



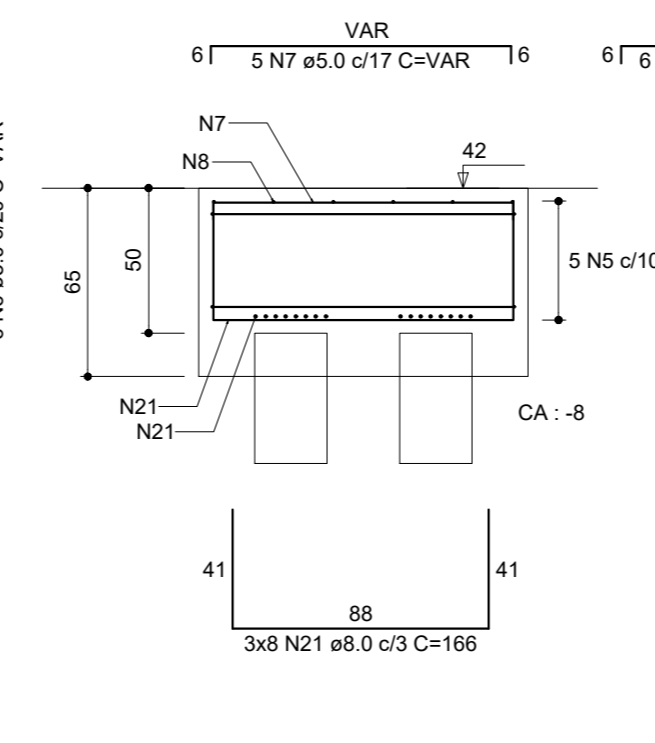
CORTE A-A
ESC 1:25



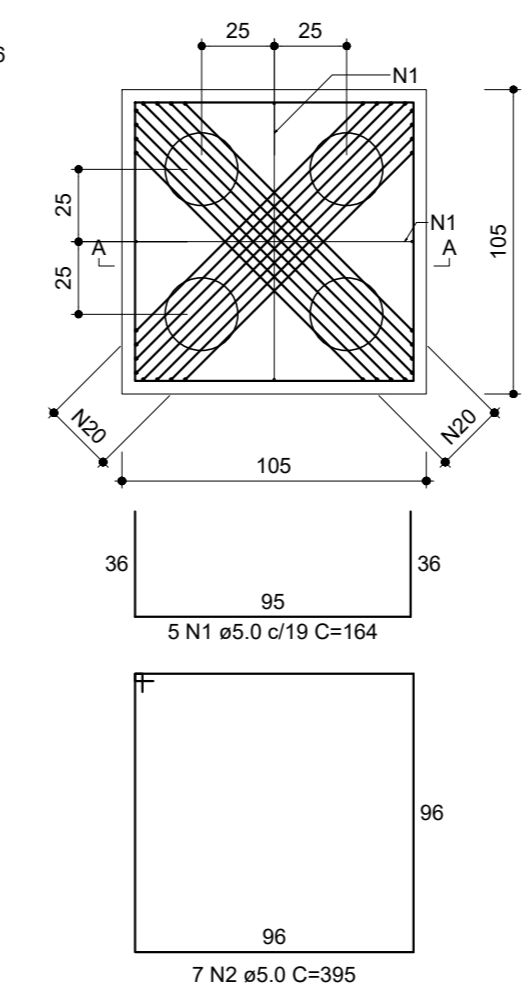
B17
3xC25
PLANTA
ESC 1:25



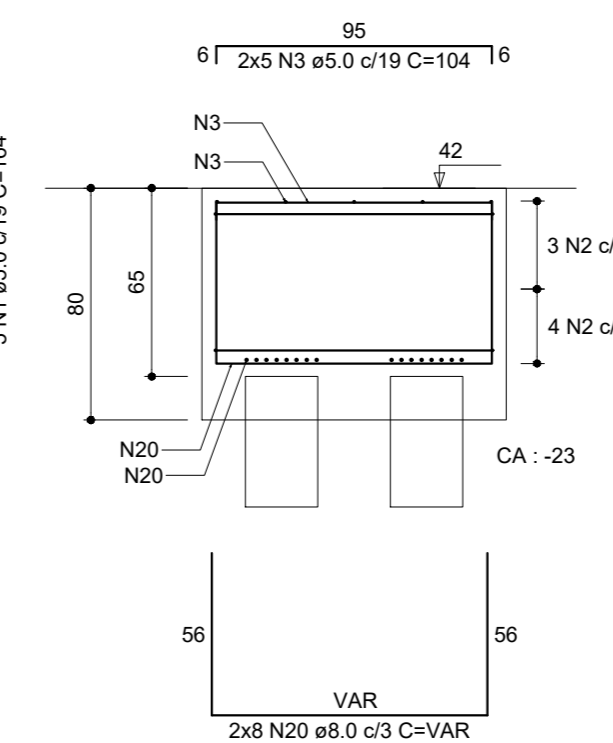
CORTE A-A
ESC 1:25



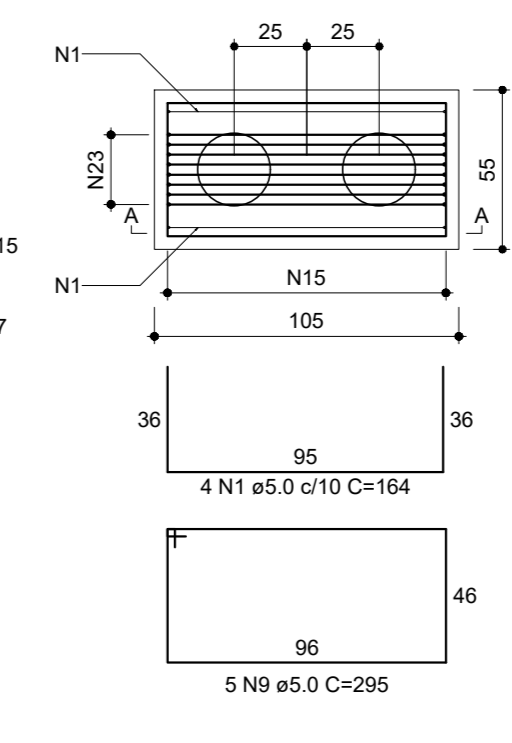
B8
4xC25
PLANTA
ESC 1:25



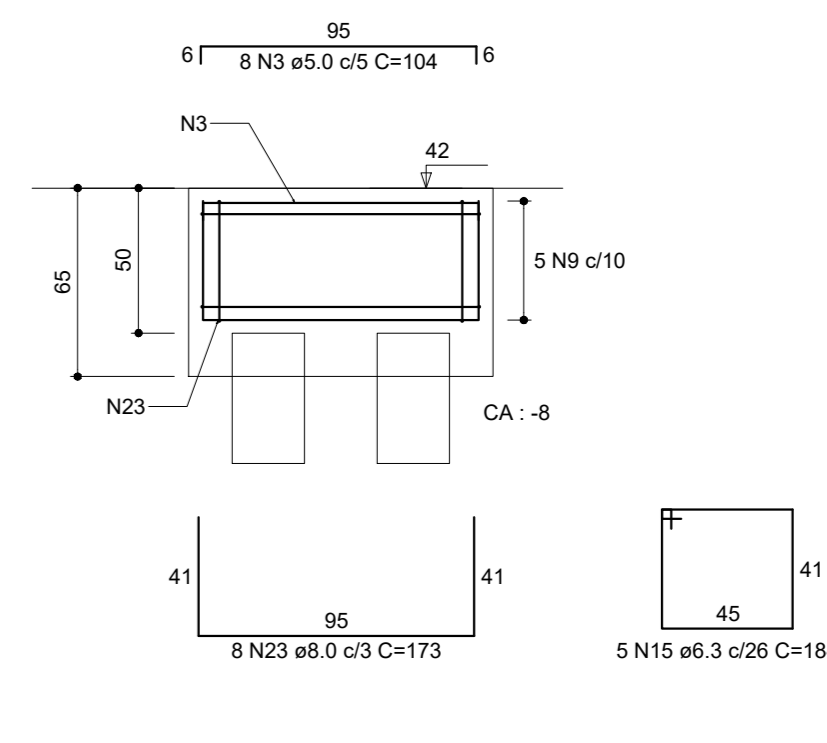
CORTE A-A
ESC 1:25



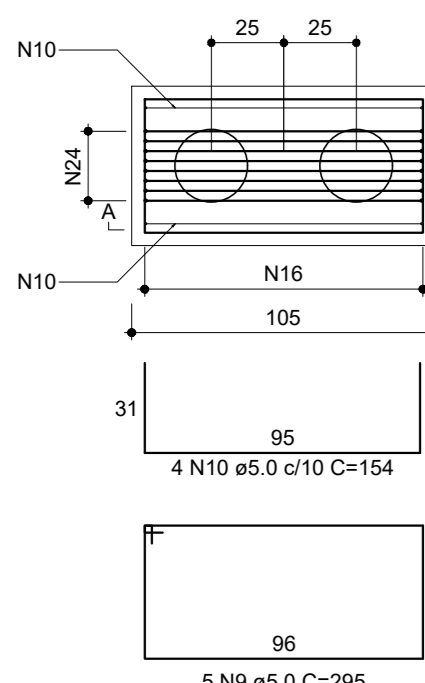
B31
2xC25
PLANTA
ESC 1:25



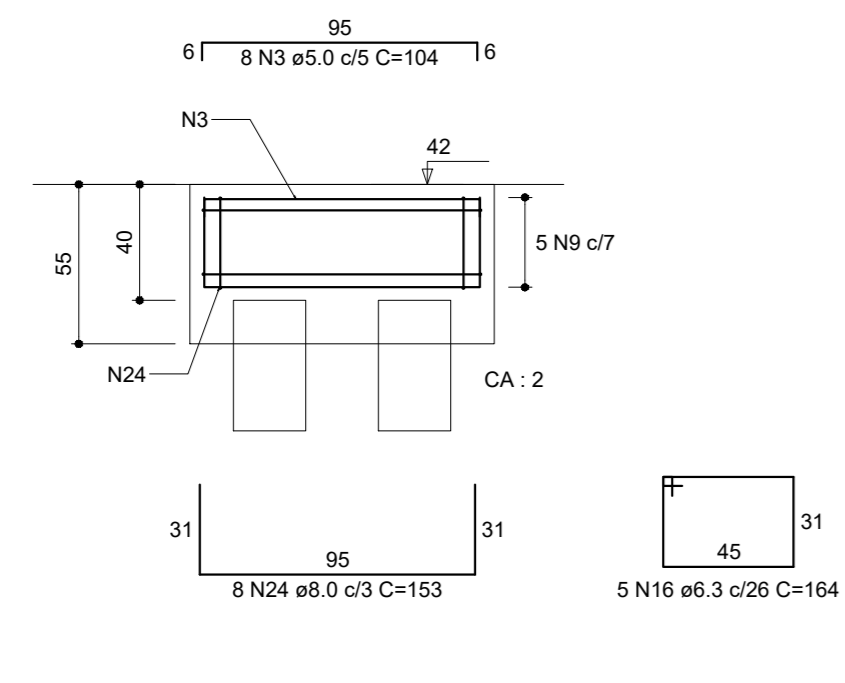
CORTE A-A
ESC 1:25



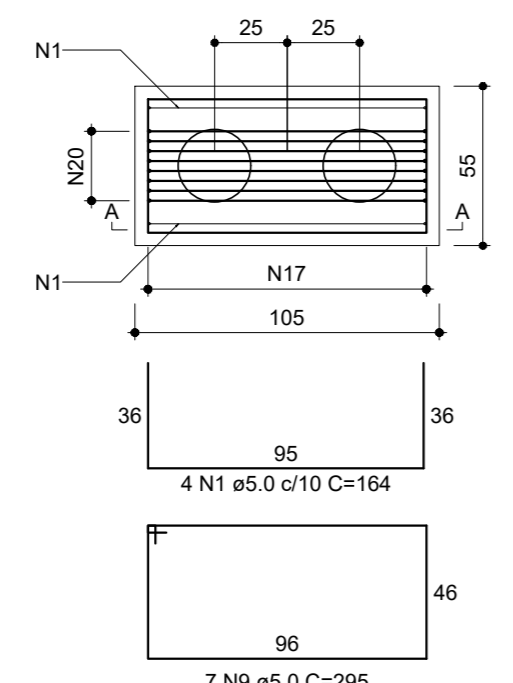
B6=B32=B34=B36
2xC25
PLANTA
ESC 1:25



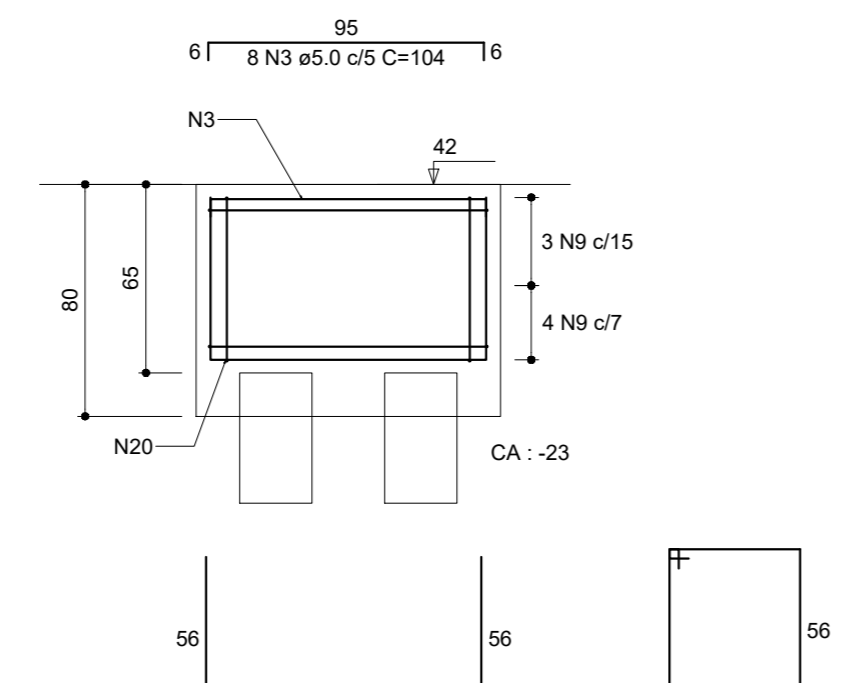
CORTE A-A
ESC 1:25



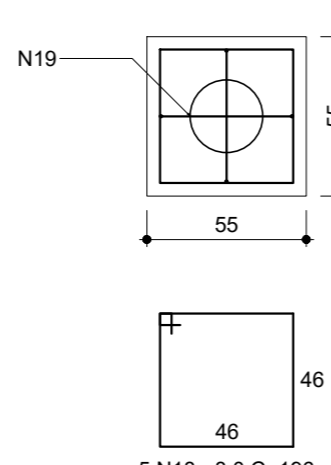
B7=B12=B13=B19=B20=B21=B22=B27=B40
2xC25
PLANTA
ESC 1:25



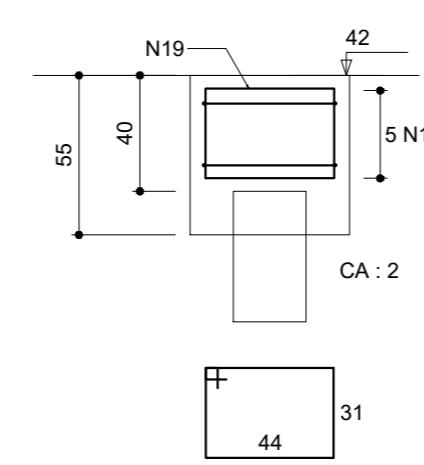
CORTE A-A
ESC 1:25



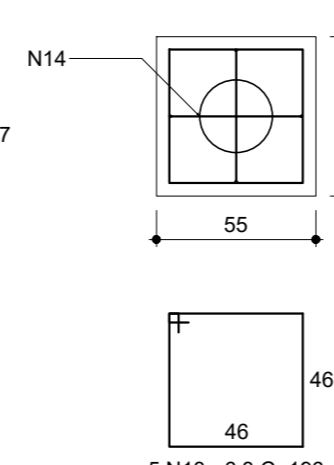
B2=B4=B38
1xC25
PLANTA
ESC 1:25



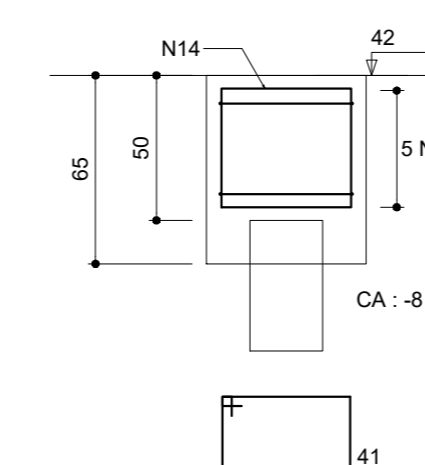
CORTE
ESC 1:25



B1=B3=B5
1xC25
PLANTA
ESC 1:25



CORTE
ESC 1:25



RELAÇÃO DO AÇO					
AÇO	N	DIAM (mm)	QUANT	C.UNIT (cm)	C.TOTAL (cm)
CA60	1	5.0	50	164	8200
	2	5.0	7	305	2135
	3	5.0	122	104	12688
	4	5.0	35	VAR	VAR
	5	5.0	40	324	14080
	6	5.0	41	VAR	VAR
	7	5.0	30	VAR	VAR
	8	5.0	42	VAR	VAR
	9	5.0	88	295	25980
	10	5.0	16	164	2624
	11	5.0	6	VAR	VAR
	12	5.0	16	VAR	VAR
	13	6.3	15	196	2940
	14	6.3	6	182	1092
	15	6.3	5	184	920
CA50	16	6.3	20	164	3280
	17	6.3	45	214	9630
	18	8.0	15	186	2790
	19	8.0	6	162	972
	20	8.0	88	VAR	VAR
	21	8.0	24	166	3984
	22	8.0	120	196	23520
	23	8.0	8	173	1384
	24	8.0	32	153	4896
	25	8.0	24	146	3504

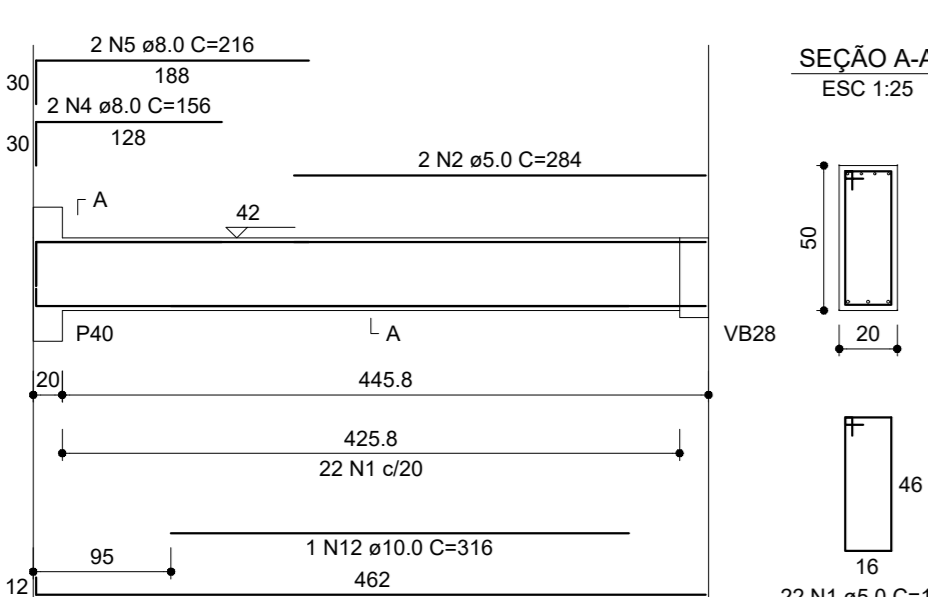
RESUMO DO AÇO				
AÇO	DIAM (mm)	C.TOTAL (m)	PESO + 10% (kg)	
CA50	6.3	178.6	48.1	
CA60	8.0	989.4	299.4	
CA60	5.0	891.9	151.2	
PESO TOTAL (kg)				
CA50		304.4		
CA60		151.2		
Volume de concreto (C-25) = 11.41 m³				
Área de forma = 61.15 m²				

RELAÇÃO DO AÇO
VB22
VB25
VB26

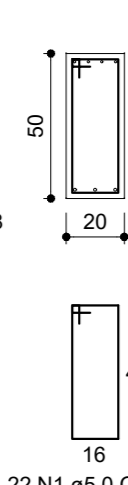
AÇO	N	DIAM (mm)	QUANT	C.UNIT (cm)	C.TOTAL (cm)
CA60	1	5.0	145	135	19575
	2	5.0	2	234	468
	3	5.0	2	257	514
	4	8.0	2	156	312
	5	8.0	2	216	432
	6	8.0	3	386	1158
	7	8.0	3	238	714
	8	8.0	3	154	462
	9	8.0	3	540	1620
	10	8.0	3	150	450
	11	8.0	3	547	1641
	12	10.0	1	316	316
	13	10.0	2	472	944
	14	10.0	3	459	1377
	15	10.0	2	605	1210
CA50	16	10.0	1	227	227
	17	10.0	1	274	274
	18	10.0	5	525	2625
	19	10.0	2	349	698
	20	10.0	2	173	346
	21	10.0	2	535	1070
	22	12.5	1	315	315
	23	12.5	2	506	1012
	24	12.5	2	204	408
	25	12.5	2	289	578

RESUMO DO AÇO				
AÇO	DIAM (mm)	C.TOTAL (m)	PESO + 10% (kg)	
CA50	8.0	98.9	25.5	
CA50	10.0	90.9	61.6	
CA60	5.0	206.6	31.8	
PESO TOTAL (kg)				
CA50		119		
CA60		35		
Volume de concreto (C-25) = 2.93 m³				
Área de forma = 35.12 m²				

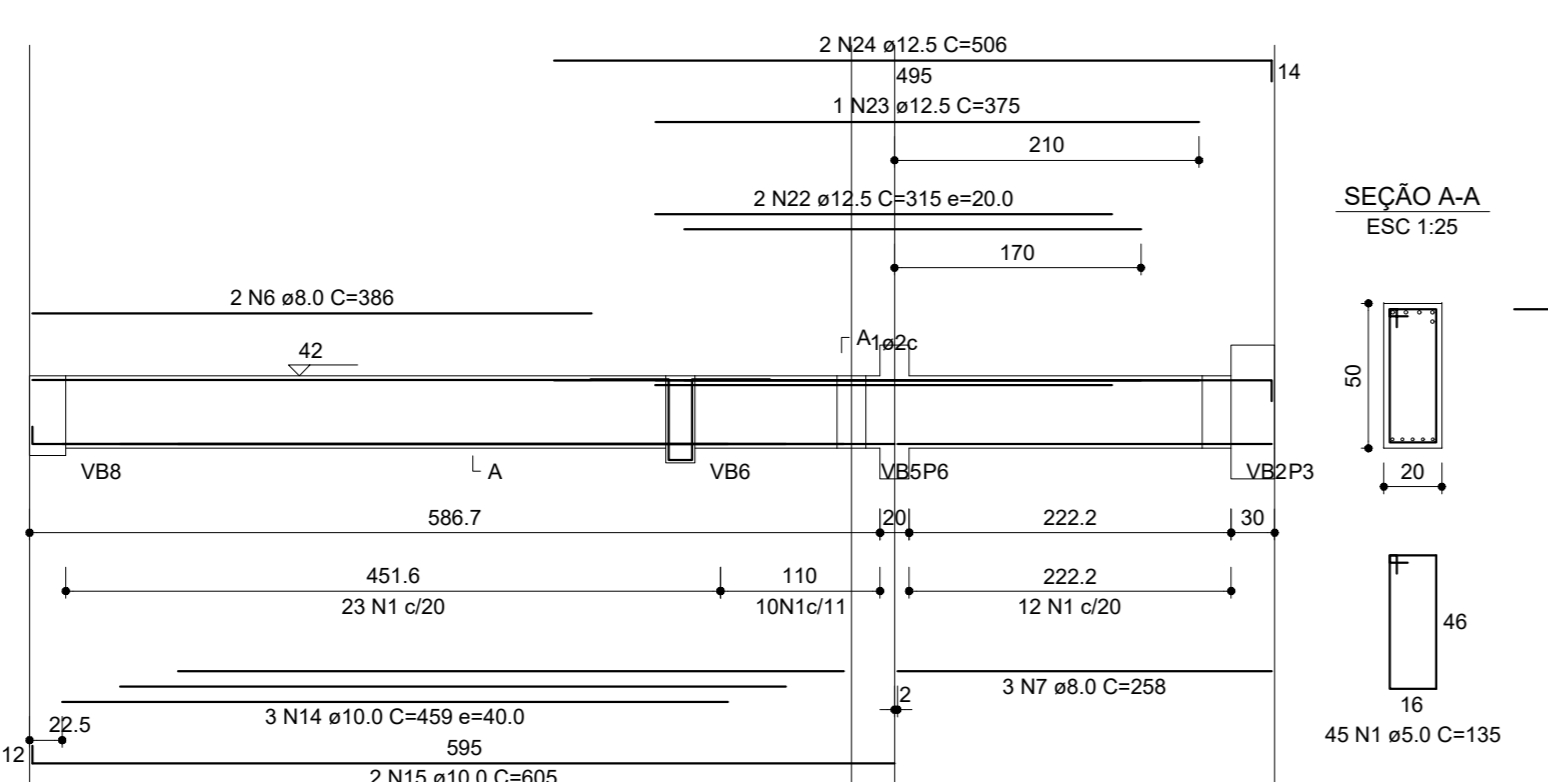
VB22
ESC 1:50



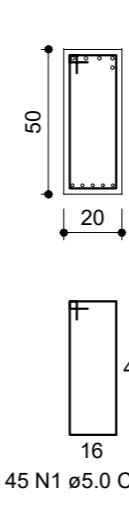
SEÇÃO A-A
ESC 1:25



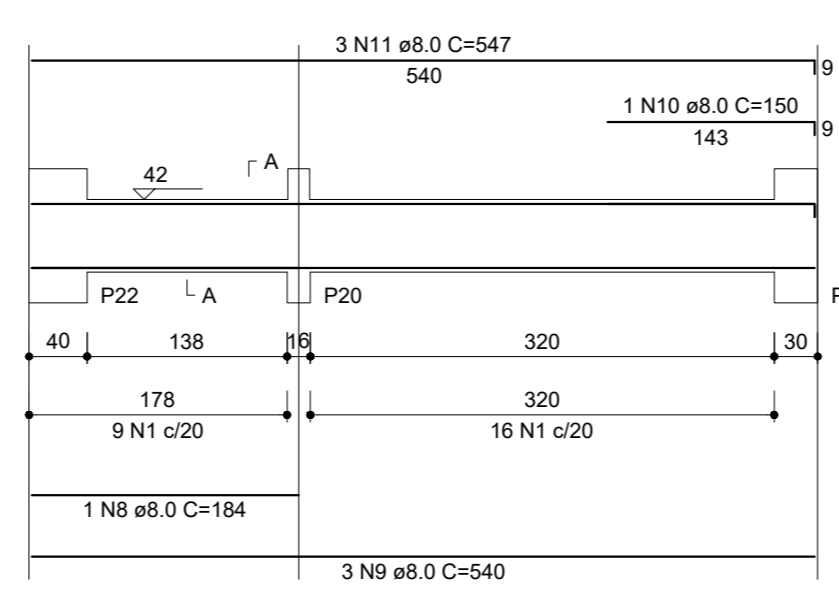
VB23
ESC 1:50



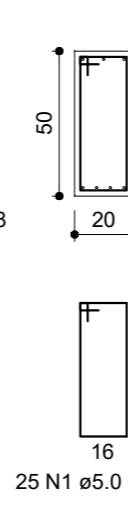
SEÇÃO A-A
ESC 1:25



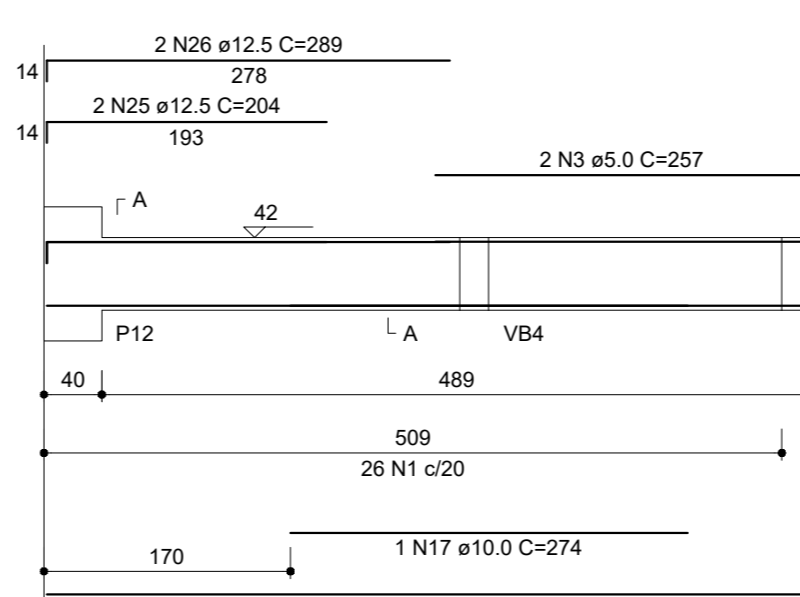
VB24
ESC 1:50



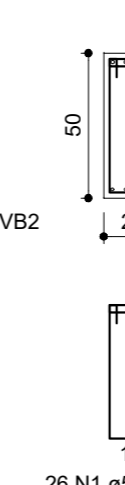
SEÇÃO A-A
ESC 1:25



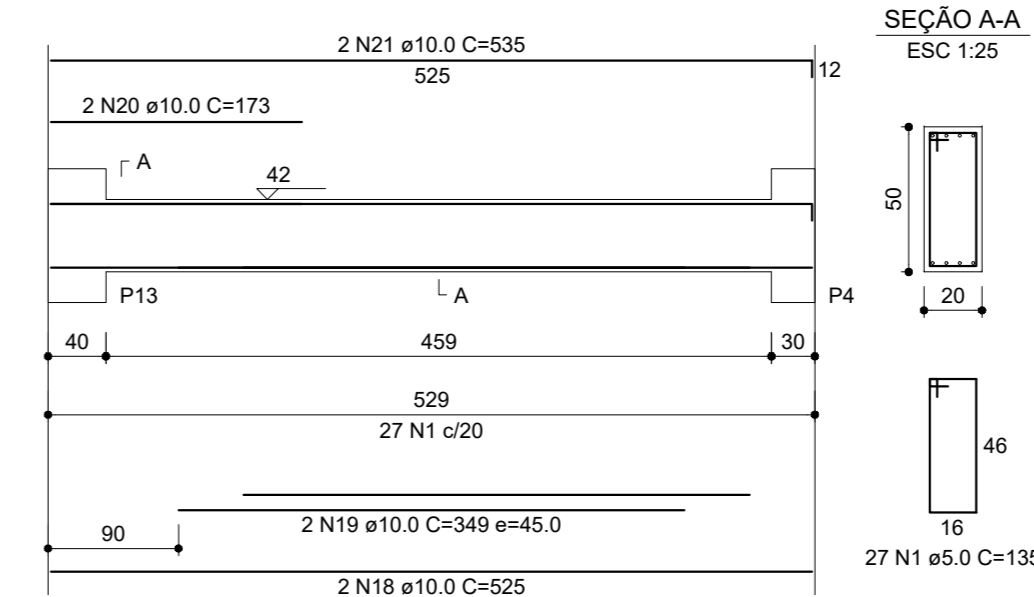
VB25
ESC 1:50



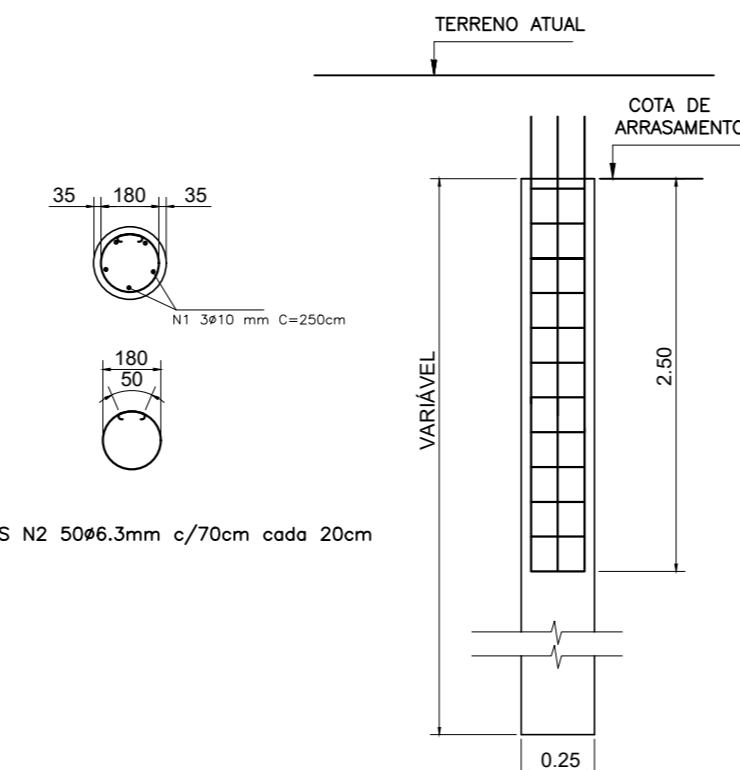
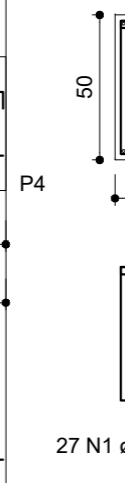
SEÇÃO A-A
ESC 1:25



VB26
ESC 1:50



SEÇÃO A-A
ESC 1:25



RELAÇÃO DO AÇO					
AÇO	N	DIAM (mm)	QUANT	C.UNIT (cm)	C.TOTAL (cm)
BROCHAS	1	10.0	295	300	88500
	2	6.3	787	70	55090
RESUMO DO AÇO					
AÇO	DIAM (mm)	C.TOTAL (m)	PESO + 10% (kg)		
CA50	6.3	530.9	144.69		
CA60	10.0	885	600.9		
PESO TOTAL (kg)					
CA50		745.59			
Volume de concreto (C-25) = 33.29 m³					

2ENGENHARIA
RUA JOAQUIM VILAS BOAS DOS REIS, 45
CENTRO - NATERICA - MG
(35) 9 9936-7680
(35) 9 9914-6183
(35) 9 9904-6122
atendimento@2engenharia@gmail.com

PROJETO COMPLETO ESTRUTURAL

PROPRIETÁRIO
CÂMARA MUNICIPAL DE ITAPEVA
CHAP. 1
19.053.594/0001-27

ENDEREÇO:
RUA PRESIDENTE KENNEDY, S/N - LOT. JARDIM MONTEIRO
ITAPEVA - MG

DETALHES

BLOCOS DA FUNDAÇÃO E VIGAS BALDRAMES

PROPRIETÁRIO
CASSIO CÉSAR ORSI JUNHO
CREA: 102036/D - MG

ESCALA:
INDICADA
DATA:
08/10/2021
FOLHA:
3/15

ESTRUTURAL